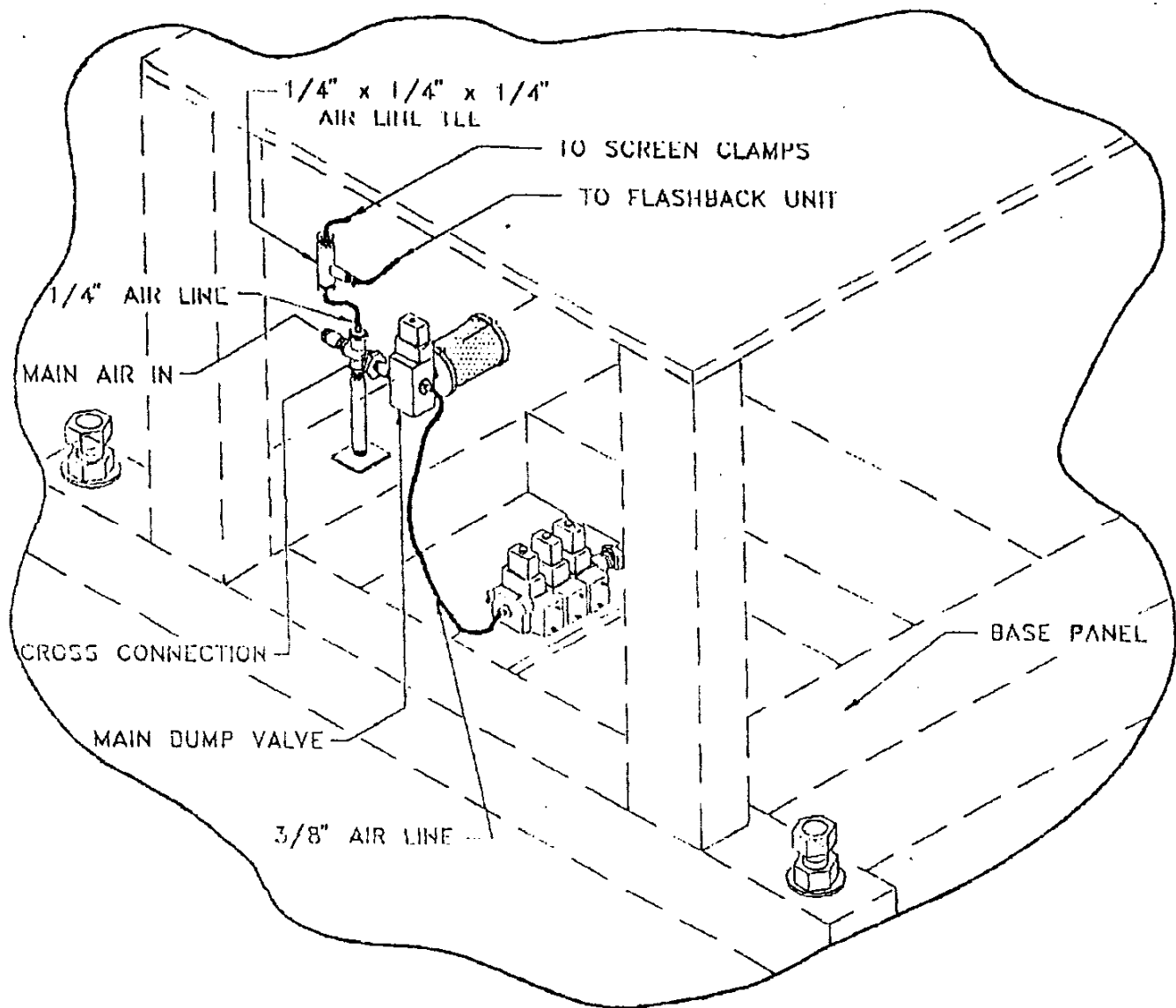


OWNER'S MANUAL

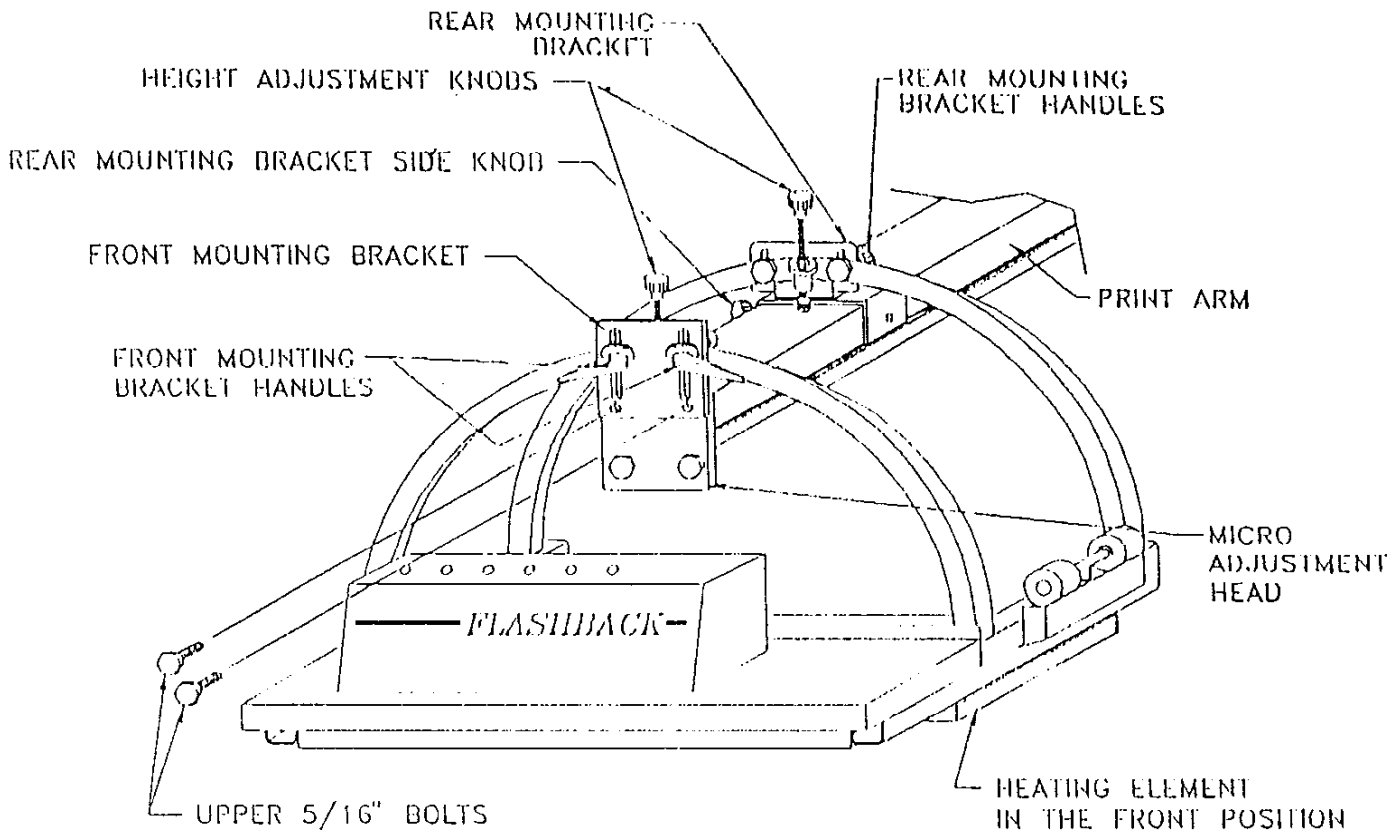
FLASHBACK

TUF PRODUCTS INTERNATIONAL, INC.

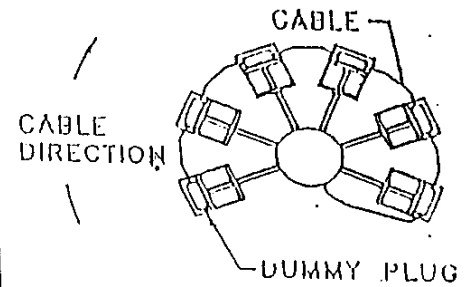
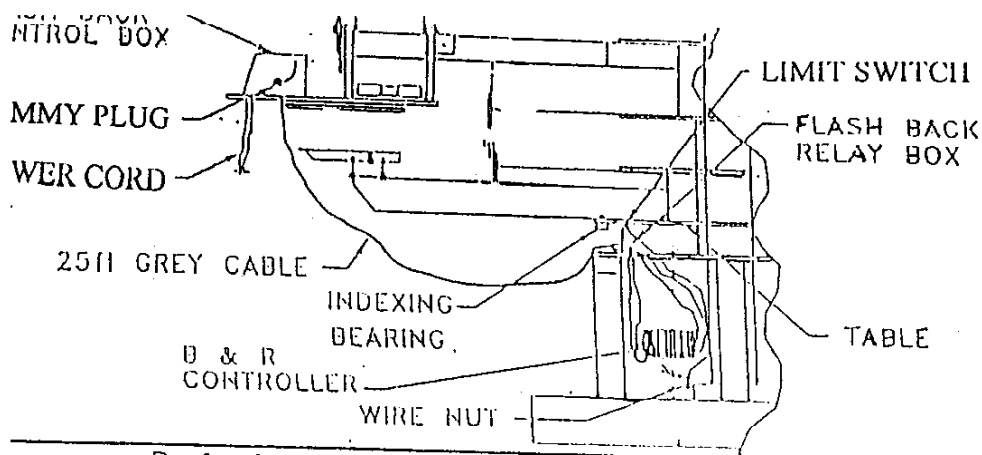
713-896-7745



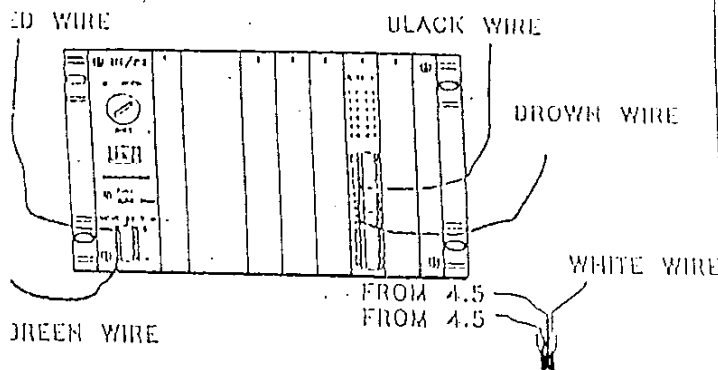
- 1) Remove base panel from the load/unload station side of base. Locate the $\frac{1}{4}$ " line on top of the cross connection, located on the left side of the main dump valve.
- 2) Cut $\frac{1}{4}$ " airline approximately $1\frac{1}{2}$ " up from the cross connection and insert the $\frac{1}{4}$ " X $\frac{1}{4}$ " X $\frac{1}{4}$ " tee.
- 3) Connect the $\frac{1}{4}$ " airline from flashback to one of the tee outlets.
- 4) Reconnect the screen clamp airline to the remaining tee outlet.



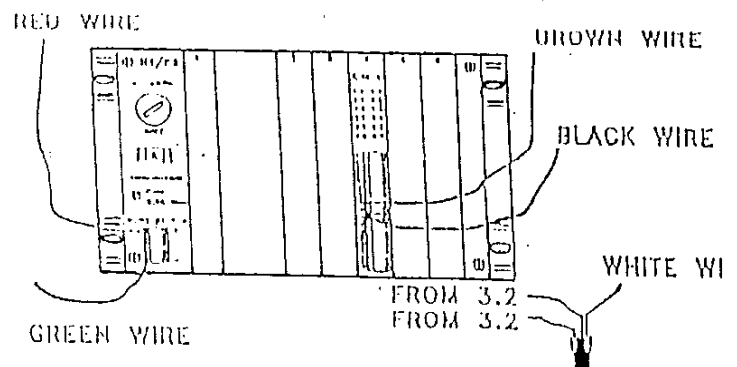
- 1) From the desired print arm, remove the upper two (2) 5/16" bolts from the micro adjustment head and set them aside.
- 2) Place the heating element in the front position as shown.
- 3) With assistance, place the flashback unit on the print arm.
- 4) Replace the upper two (2) 5/16" bolts in the micro adjustment head and tighten them.
- 5) Advance the rear mounting bracket side knob until it is tight against the print arm.
- 6) Position the heating element between the screen and pallet and with the height adjustment knobs, adjust the flashback unit to the desired height.
- 7) Tighten front and rear mounting bracket handles.



B & R CONTROLLER
JAVELIN FLASH BACK WIRING HOOK UP



B & R CONTROLLER
OLYMPIAN FLASH BACK WIRING HOOK UP



- 1) On the bottom side of the flashback relay box, remove liners from the tape.
- 2) Position relay box approximately 1" inside the indexing bearing area.
- 3) Adjust the limit switch height so that electrical switch connect is made when the table is in its down position.
- 4) Remove the two (2) wires in location (Javelin 4.5)(Olympian 3.2) of the black B & R controller. Wire nut them together with the white wire coming from the flashback relay box.
- 5) Take the red, green, brown, and black wires leading from the flashback relay box and mount them to the B & R controller. The location are as follows: Red into "+24VDC", Green into "-24VDC", Brown into location (Javelin 4.5) (Olympian 3.2) and Black into location (Javelin 4.0) (Olympian 3.4) with the wire present.
- 6) Plug the 25 foot gray cable from the Flashback control box into the Flashback relay box. Both the cable and connector are keyed and must match before the cable can be inserted.
- 7) Insert the dummy plug into the last Flashback unit used. The connector is found on the right side of the flashback control box.
- 8) Replace panel, leaving the 1/4" airline and Flashback relay box wires exiting between the panel and the base.
- 9) The Large black power cord is wired to an outside source. It is 220 volt Single Phase, the wire colors are as follows:
Green=Ground, White=Neutral, Black and Red are 110 volts each, which equals 220 Volts, Single Phase.

TUF PRODUCTS INTERNATIONAL, INC.
FLASHBACK™ FLASH DRYER
OPERATING INSTRUCTIONS

The Flashback™ Flash Dryer is Tuf Products revolutionary new flash dryer which allows the screen printer to print and flash at the same station automatically! **Please read the following instructions carefully prior to operating or installing the unit!** Once your Flashback is installed, please test the following procedures without turning the HEAT on. If you experience any difficulties, call your service representative.

Heat/On-Off Switch: This turns the heating element on. **Please exercise caution once the heating element has been turned on. IT GETS VERY HOT!** Always utilize the blower in conjunction with the heating element. The heat on/off switch also turns on the blower fan. The blower fan keeps the element cooled down somewhat to prevent overheating of the silk-screen, the ink, etc. It works by blowing air between the heating element and the bottom of the silk-screen.

Auto Flash/On-Off Switch: This switch disables the auto-operation and stationary-flash when in the "Off" position. The Flashback will remain in the retracted position and will not go into the Flash Position. This is for when you don't want it to operate during print operations (and you don't want to remove it).

3-Position Switch: **In the Print-Flash-Print-Flash Mode**, the element will go in the every time the squeegee strokes the platen. If the printer is in double stroke, it will flash each print. In the Print-Print-Flash mode, the head will give you two strokes of ink then flash. In the Print-Flash-Print mode, the head will print again, without a second flash.

Flash Table Up/Down Switch: **CAUTION-**This switch operates as a stationary flash dryer unit when in the "UP" Position. Each time the table is raised the element will extend over the platen to flash dry the garment. In the "DOWN" position, you can take advantage of all the above optional features. **"To Operate In the "UP" Position Requires Important Adjustments". YOU MUST FIRST REMOVE THE SILK-SCREEN AND REMOVE THE FRONT SCREEN CLAMP (BY REMOVING THE TWO ½" OFF-CONTACT NUTS). You must raise the entire Flashback unit at least 2" to provide clearance for placing the platens to the raised (Table-Up) position, Finally, adjust the entire Flashback unit up to a position allowing for a minimum of ½" of clearance between the flashback heating element and the raised platen. **FAILURE TO OBSERVE THESE COULD DAMAGE THE FLASHBACK, HEATING ELEMENT, PRINT PRODUCT OR PLATENS! THIS WILL VOID YOUR FLASH & PRESS WARRANTY!****

Extend: This controls the speed at which the element extends over the platen.
CAUTION: If it is set too slow, the garment may over-cure or scorch. It is recommended that you start faster and back up the speed to the proper setting for your printing needs.

Retract: This controls the speed at which the element returns to the out position. This knob should be adjusted at a speed that will flash dry the garment at the appropriate level.

Safety First

THIS EQUIPMENT SHOULD ONLY BE OPERATED BY A SCREEN PRINTER EXPERIENCED ON AN AUTOMATIC PRINTER. THE FLASH BACK MOVES OUTSIDE THE SAFETY STOP CABLE, HAS HIGH-VOLTAGE ELECTRICAL POWER AND A VERY HIGH-INTENSITY HEATING ELEMENT WHICH HEATS THE UNIT ITSELF TO VERY HIGH TEMPERATURES. DO NOT TOUCH ANYTHING BUT THE CONTROLS WHEN IN OPERATION OR WHEN THE HEATING ELEMENT IS HOT. DO NOT OPERATE WITHOUT READING THESE INSTRUCTIONS CAREFULLY. DO NOT LEAVE THIS EQUIPMENT UNATTENDED WHEN OPERATING. ALWAYS KEEP FIRE EXTINGUISHERS NEAR YOUR PRESS.