

TUF FREEDOM

Professional & Affordable Automatic Textile Printer



STANDARD PRODUCT FEATURES

- FlashBack Compatible
- Quick-Change-Over / Pneumatic Screen Clamps
- Quick-Release, Double-Durometer, Floating-Squeegee
- Off-Contact Adjustment
- Front and Rear Micro Registration
- Independent Print and Flood Speed Control
- Fast and Easy Print and Flood Angle Adjustments
- Maintenance Free Print Heads
- Adjustable Stroke Length
- All-Access Control Panel with Easy-View Registration Lamp
- Micro-Processor Controls: Sample Print Mode, Missed Shirt Feature, Begin/End Production, Adjustable Print/Flood/Index Delay, Foot-pedal or Automatic Mode, Single/Double Print Stroke, Individual Head Sample Print
- All-Point Registration System
- Production Counter

PERFORMANCE FEATURES

	Freedom 6-8	Freedom 8-10
Complexity of Designs	✓ Good	+ Better
Production Speed	✓ Good	+ Better
Image Size	✓ Good	✓ Good
Floor Space	! Best	! Best

PRODUCT FEATURES

- **Configurations:** 6 or 8 Color Models
- **Print Area:** 16" x 18" (40x46cm)
- **Standard Pallet Size:** 17" x 23" (43x58cm)
- **Index Speed:** Up to 45 dozen per hour
- **Machine Diameter:** 10.5' (3.2m) to 12.5' (3.8m) Diameter
- **Options:** 34" (86cm) Doorway Knock-Down (6 color model only)
Youth and Sleeve Pallets and Squeegees

Are you tired of long days of manual printing or turning down larger jobs? With its compact size and affordable price, Freedom is a smart choice for your first automatic! Order your Freedom with the optional 34" (86cm)—Doorway Knock-Down feature, and Freedom can easily be delivered to and setup in smaller shops. Freedom's exclusive self-leveling squeegee, simple-to-use controls and micro-registration ensure that setups are as fast and easy as with your manual press. Go home early—both small and large jobs can be printed productively with the Freedom.



Freedom 6 color 8 station



Freedom 8 color 10 station

COLOR/STATIONS | STANDARD PRINT SIZE: 16" x 18" (41 x 46cm)

FREEDOM 6-COLOR 8-STATION	PART	CAA-5000A	FREEDOM 8-COLOR 10-STATION	PART	CAA-5000C
Power for 4 or 6 Color Auto: 110v, 50-60Hz, 10amps, 110psi (7.6bar), 22cfm (623 l/m)					
Power for 8, 10 or 12 Color Auto: 110v, 50-60Hz, 10amps, 110psi (7.6bar), 30cfm (850 l/m)					
KNOCK-DOWN OPTION for 34" (86cm) Doorway (6 color model only) NOTE: This Option Must Be Pre-Ordered					
	PART	CR-5926			

STANDARD TUF FEATURES

Maintenance-Free Print Heads



Maintenance-Free Print Heads

All Tuf automatic presses feature our exclusive 100% pneumatic, maintenance-free print heads! Mechanical stroke-length adjustment and our All-Access Control Panel eliminate the maintenance associated with machines using electronic sensors or controls on the print head. Tuf's squeegee carriage is proven to provide years of trouble-free printing in the most demanding of production environments.

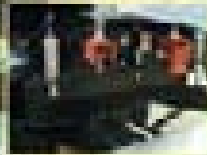
Quick-Release Floating Squeegee/Flood Assembly

Tuf's style of quick-release, floating squeegee/flood assembly is typically found only on much more expensive European equipment. This time tested floating print / flood method provides a consistent pressure and ink deposit throughout the image area. The quick release center pin is a great alternative to expensive pneumatic squeegee clamps and faster and easier to use than clumsy U clamps.



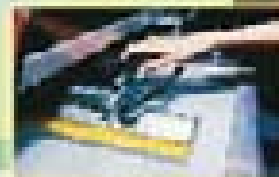
Quick-Change-Over/Pneumatic Screen Clamps

Pneumatic Screen Clamps enable you to quickly clamp and unclamp screens with the flick of a switch. Combined with the Spring-Loaded rear clamp, changing out screens takes only seconds.



Fast and Easy Print/Flood Angle and Pressure Adjustments

Tuf's Print Angle, Flood Angle and Pressure Adjustments mimic the way that you print manually, making adjustments fast, easy and intuitive. Compared to conventional chopper-style systems, our system gives you a full range of pressure and angle adjustments with fewer knobs and ratchet handles to adjust.



Single-Piece, Double-Durometer Squeegee/Flood Assembly

All Tuf automatics are equipped with single-piece, double-durometer (70-80 duro) squeegee/flood assemblies. Consider the time savings. Our single piece design minimizes cleaning and set up efforts. Changing from a coarse mesh with a thicker ink to a fine mesh with halftones is as simple as flipping over the squeegee / flood assembly.

Front and Rear Micro-Registration, Pre-Registration System Compatible

Tuf print heads offer super-responsive front and rear micro registration standard! Microregistration's precision machined grid pattern provides excellent control and visibility of screen position and movement. Screen clamps are compatible with popular pre-registration systems.



On-Head Print Controls

On-Head print controls include Independent Print and Flood Speed Controls and Independent Front and Rear Pneumatic Screen Clamp Switches. Individually and infinitely select the print and flood speeds to achieve your desired print results. Flick a switch, pneumatic screen clamps make setup and teardown a breeze.

STANDARD TUF FEATURES

All-Access Control System



All-Access Control System

Tuf's All-Access Control System is easy to learn and operate.

All-Access Control Panel

- Automatic or Manual Production Modes
- Sample Print
- Begin/End Production
- Rotating Registration Lamp
- Print Head Controls:
 - Zero, Single, or Double Print (Up to 99 on Olympians)
 - Individual Head Sample Print
- Double Index Mode (Javelin and Olympian Only)
- Foot Pedal Controls
 - Missed Shirt Feature
 - Manual Production
- Adjustable Delay Timing
 - Print, Flood, Index
- Emergency Stop

All-Access Provides Complete Control From Anywhere

The All-Access Control Panel can be rotated to any print station. This unique flexibility gives you complete control of the entire machine from anywhere on the press!

Aligning Screens Has Never Been Easier

Incorporated within the All-Access Control Panel is a Registration Light. This handy light illuminates your work area to facilitate screen alignment any speedy setups.

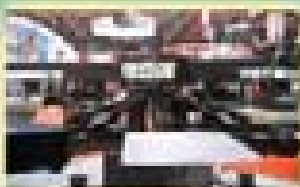


Manual Mode

Manual (Foot Pedal) Mode helps first-time automatic owners and new employees gain skill and confidence. Start in manual mode and switch to the automatic mode when you are ready for increased production. Manual mode feature helps with setups.

Missed Shirt Feature

Missed Shirt (Foot Pedal) minimizes waste. Unlike electronic missed shirt detectors, it is not sensitive to mis-loaded garments, spray adhesive or lint!



All-Point Registration

Machine registration is an important key to a quality product. Accept nothing less, some manufacturer's offer only 3-point registration, while Tuf exclusively offers All-point registration for maximum quality and reliability.